



BEER MATTERS



Issue 475 June 2017

@shfcamra
/sheffieldcamra
sheffieldcamra.org.uk



CAMPAIGN
FOR
REAL ALE

THE
SHEFFIELD
BREWERY CO.
LTD

ANNOUNCING OUR RANGE OF MOST EXCELLENT

FINELY
POLISHED
BEERS

AWARD WINNING CORE RANGE * MONTHLY SPECIALS
BOTTLED BEER * BREWERY TAP ROOM * BREWERY TOURS
PURCHASE BEER DIRECT FROM THE BREWERY * BEER CLUB



FINELY POLISHED BEERS SINCE 2006



FIND US AT
THE SHEFFIELD BREWERY CO.
UNIT 11, JO ALBYN COMPLEX
BURTON ROAD, SHEFFIELD
S3 8BT



THE HALLMARK OF A PERFECT PINT

TEL: 0114 272 7256
SHEFFIELDBREWERY.COM

FOLLOW US ONLINE
@SHEFFIELDBREWERY



3,500 monthly
circulation

Editors

Dominic Nelson and
Poppy Hayhurst
beermatters@sheffieldcamra.org.uk

Articles, comments and
suggestions are most
welcome so please send
them in*

Advertising

Paul Crofts
advertising@sheffieldcamra.org.uk

Quarter Page £40+VAT
Half Page £60+VAT
Full Page £90+VAT
Inside Cover £100+VAT
Back Cover £110+VAT
Discounts for regular placements

PDFs or high-res (300 dpi)
bitmaps only please

Design from £30
Updates from £10

Next copy deadline
Friday 2nd June

Opinions expressed are those of the
author and may not represent those
of CAMRA, the local branch or editor.
Beer Matters is © CAMRA Ltd.

*For legal reasons a full name and
address must be provided with all
contributions.

The free magazine of CAMRA Sheffield & District Issue 475 June 2017

News

4

New committee
GB Home Brew Challenge
Closing Times
Tour de Yorkshire
Beer Census
Volunteers' Week
Beer Day Britain
Music in the Gardens
Heritage Open Days



Breweries

14

Exit 33
Bradfield
Fuggle Bunny
Steel City
Neepsend
Abbeydale
Welbeck Abbey
Stancill
Blue Bee



Pubs

24

Heritage pubs - Rutland Arms
ACV and planning update



Grand Day Out

28

Stockport and its Slope



Awards

30

Pub of the Month June 2017
PotM May 2017 presentation
Club of the Year 2017



Festivals

32

Diary

36

Committee

38

New committee

As we mentioned in our last issue, there were several changes to the committee following the recent AGM, with a existing members changing roles and a few new faces entering the fray.

Together, we are hoping to continue working hard for the real ale drinkers of Sheffield and the surrounding areas. We thought we would introduce ourselves, so here goes...



Paul Crofts
Secretary, Press Officer and Deputy Festival Organiser

I joined the committee 2 years ago, after many years of appreciating CAMRA's work in promoting good beer and pubs. I work in the furniture industry for a local manufacturer and am a big music fan, particularly live music. As a born and bred Sheffielder, I'm keen to help promote Sheffield's breweries and pubs and I believe that is something the committee will build on in the coming year. I am involved with the Steel City Beer & Cider Festival, which is something I really enjoy and have taken on the role of Deputy Organiser for this year. (Spare time is so last year!) If you see me out and about, feel free to stop me for a chat and we can lower a couple for the tonsils (one of my favourite phrases, courtesy of P. G. Wodehouse).

Andy Cullen
Treasurer

Andy has been actively involved in CAMRA for over 15 years after being recruited to sit on a national younger members task group, since holding roles locally including secretary, membership secretary and Chairman; also editing *Beer Matters* maga-



Mick Saxton
Chair

Beer has been an important part of my life for over forty years and, although I brew beer at home, I love the life and atmosphere of a good British pub. In many respects I am a traditionalist, and I have strong views on the directions in which the British beer brewing and drinking scenes are being pulled. I also believe in encouraging as many CAMRA members as possible to get involved in branch activities and decision-making, so that we can say with confidence that we are a representative campaigning body. Therefore, I feel very privileged to have the chair of CAMRA's Sheffield & District branch at this interesting time, to help promote and support cask conditioned beers, real ciders and perries, and British pubs.



Louise Singleton
Vice Chair and Beer Festival Organiser

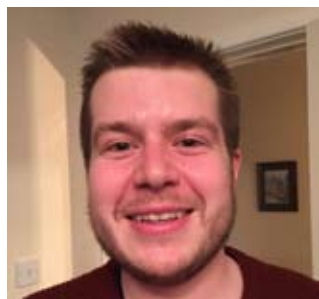
I became involved with Sheffield CAMRA when I volunteered to help at the 2011 AGM. Following that I volunteered at the festival at Ponds Forge, and was soon given the task of Staffing Officer. I became Chair of the Festival Organising Committee for the 41st festival, and again this year. I am not from a Beer Industry background as I work in Pensions Administration, and although working 60+ hours on the festival week I really enjoy it, though at times through the tiredness it doesn't seem that way! It is a long 11 months organising the festival with many obstacles to overcome, but I do enjoy working with the other volunteers and am very proud of what we achieve together.

zine for many years up until last month - this is the first issue with new editors Dom and Poppy! Andy has also been staffing officer at the Steel City Beer & Cider Festival for almost every one held since becoming active in the branch, except from 2012 to 2015 when responsible for the beer order!



Dave Pickersgill
Pub Heritage Officer

CAMRA member since the late 1970's: SCBF43 will be the 36th. Sheffield CAMRA festival at which he's worked. Leads on Pub Heritage and associated issues within the branch. His e-book on Work-sop and Retford Brewery has now sold over 100 copies!



Dominic Nelson
Beer Matters Editor

I first came to Sheffield as a student seven years ago, and the beer is one of the things I really like about this city. I've

been drinking real ale and going to beer festivals for a few years now although I only joined CAMRA in December last year. I enjoy writing, so this is a perfect role for me really! I'm looking forward to getting the news out there about the great breweries and beers that Sheffield has to offer. I'll be working closely with our Social Media Coordinator, Poppy, to try and reach as many people as possible. If there's anything you would like to see in the magazine, you could just send me an email, but why not try and find me in the pub?



Poppy Hayhurst
Social Media Coordinator

I didn't really think I was into real ale, but I downloaded a beer scoring app a couple of years ago and have checked in over 500 different beers since then (not all full pints, don't worry!) so I guess I'm a convert. I spent a year exploring all the microbreweries and beer festivals in South London, and having moved to Sheffield earlier this year joined CAMRA as a way of meeting people with similar beery interests. My background is in marketing so I'm looking forward to growing Sheffield & District CAMRA's social media presence and

I'm sure you'll be hearing a lot more from me in the run-up to the Steel City Beer & Cider festival.



Patrick Johnson
Social Secretary

I moved to Sheffield from Newcastle 5.5 years ago and straight into the Kelham Island area to partake of its many glorious pubs and myriad pale ales. While I've been a member for almost 11 years, I was 'activated' only last year and am continuing in the same committee position again this year; it must have been good!



Glyn Mansell
Committee Member

After a number of years as a draught Guinness drinker (I still enjoy one occasionally) Graham my brother cajoled me to start drinking real ale. I remember many years ago going with friends to a new pub called the Fat Cat

(originally called The Alma?), apparently a “Real Ale Pub”. That was the start of my idea of a really good pub, now supported with many others in Sheffield and elsewhere. Graham and I are to be found most Thursday evenings exploring other pubs in Sheffield.

I joined CAMRA a few years ago having an interest in real ale issues and started attending Sheffield and District branch meetings just over a year ago. So far I've really enjoyed the Peak District Pub Trips and a RambAle walk. Currently my position is a Committee Member and at branch/committee meetings I raise issues and ask questions. My interest is supporting all Sheffield real ale pubs

and how to encourage more CAMRA members to vote for their local pub. My other interests are walking in the countryside (staggering if on a pub crawl), travelling, cycling, conservation work and having fun with our grandchildren.



Sarah Mills
Real Cider Champion
Hi, my name is Sarah Mills. I have been a member of

CAMRA for about seven years. I was encouraged to join because I wanted to get involved with the beer festival. I joined at the time when cider was a small sideline and since I have been joint cider bar manager I have seen it go from strength to strength. I enjoy talking about the ciders we sell and like to encourage customers to try the new things we have on offer.

Also on the committee:

Alan Gibbons
Pub of the Year and Good Beer Guide Coordinator

Mark Boardley
Pubs Campaign Coordinator



Great British Home Brew Challenge

Thornbridge Brewery have once again teamed up with Waitrose and Brew UK for the

2017 edition of the Great British Home Brew Challenge. If you are a dedicated home-

brewer, or you would like to try your hand at making a good beer from the comfort of your own home, then this is the competition for you! All you have to do is create your own brew and submit it so that it can be judged by some of the most discerning palates in the world of beer. If you're successful, your beer will be brewed at the Thornbridge brewery and sold across the country in Waitrose supermarkets. Past winners of the challenge include 2014's *Vienna IPA*, 2015's *Rhubarbe de Saison* and last year's *Raindrops on Roses*.

Entry is free and more details can be found online at **gbhomebrew.co.uk**. Good luck and happy (or should that be hoppy?) brewing!



Closing Times

About twenty years ago my father, Michael Liversidge, produced a book entitled *The A-Z of Sheffield Public Houses*. The book was well received by the people of Sheffield and sold reasonably well for a small print run, local interest, book. This book is now a collectors item. Albeit disinterested at the time, I have come to notice that the book which included over 600 images and small profiles or simple addresses has seen closures of around 400 of the hostelries that were still serving when my father was a frequent pub-goer.

Using over 100 of his original colour images (the A-Z book was printed in black and white only, so some of these images will be seen in colour for the first time) I have tried

to find the exact locations of some of these now demolished drinking establishments to produce a then-and-now format book. Places like the Broughton Inn which was sited where the corner of the Sheffield Motorpoint Arena car park now stands, The Hole in the Wall now literally, itself, a hole in the wall just before the Wicker, The Hare and Hounds Nursery Street where, at the time just before going to press, I took an image of the rubble of the demolished pub with just the letter H of the pub sign still on view. The Beehive in Wadsley is now a Tesco supermarket which the last landlady stated was the very reason for the closure, cheap alcohol. Other now defunct old pubs are being used as businesses, turned into apartments, flats and houses. A prime example is the Hay-chatter Inn in Bradfield which is now a private dwelling known as Haychatter House. The Furnival on Verdon Street has been re-launched as a religious establishment The Methodist Church of Sheffield.

I hope you are reminded of some of the good times you had in these old Sheffield public houses and hopefully go out and take some photographs yourself of the places that are there one minute and gone the next. Go on, get your cameras out.

The list within the book is in alphabetical order A to L of Sheffield public houses. List M to Y will be in volume two.

Mark Liversidge

**Tour de
Yorkshire**

Tour de Yorkshire

On Sunday April 30, the 2017 Tour de Yorkshire cycling race finished in Stocksbridge. The final 20 km included 4 top category climbs, but also passed a number of local pubs in our area. They all reported good business on the day, extending opening hours and utilising extra serving space. The Friendship, for example, had an extra bar to the rear of the pub and was involved in an all-day extravaganza on the precinct opposite.

The Castle Inn (Bolsterstone) had a marquee and the pubs in Deepcar (King and Miller and the Royal Oak) both put on a show. However, the prize for 'best-dressed pub' went to the Castle in Bolsterstone.



**Castle Inn, Bolsterstone
3 May 2017**

We expect to see the Tour de Yorkshire return to Sheffield in the future and hope that the Tour de France is back before too long!

Dave Pickersgill



Beer Census

Saturday 10 June sees the return of the Annual Beer Census for 2017.

As many of you will be aware, Sheffield & District CAMRA organises this city-wide survey to collect information on which beers are available in the city on a particular day. We have been doing this for a few years now, and we are pleased to say that despite various claims from other cities such as Norwich, Derby and Nottingham, the information on the number of beers on sale usually shows that Sheffield can rightly claim to be Beer Capital of the UK. This claim was given further weight after the findings of the recent Beer Report, commissioned by Sheffield University and written by well-known author Pete Brown.

It is now time to undertake the census again, and we

are looking to enlist more volunteers to help collect the information. There are several daytime crawls, starting in various suburbs and working into the centre, followed by a number of city centre crawls in the evening. Each crawl will be led by a designated leader who will have the survey forms and a planned route through the various pubs.

Daytime crawls will start at 12 noon, and eventually arrive at the Red Deer on Pitt street by early evening to hand in the completed forms. Evening crawls then start from the Red Deer moving out through the center and regrouping in the Kelham Island area. The crawls are a sociable way to try different pubs and clubs from your usuals, as well as helping to further the beer scene in Sheffield. Most of the routes will involve public transport at some point, but your route leader will have details and can advise on costs etc.

If you would like to join on one of the crawls simply be at the start point for midday and look out for someone carrying survey forms, and a copy of *Beer Matters*. If you can't make the start, email social@sheffieldcamra.org.uk and we will pass on the mobile number of the appropriate leader so you can arrange directly with them where you can join on the crawl.

If you are unable to join on a crawl, but would still like to help with collecting information, we will have an interactive survey section on the Sheffield CAMRA website where you will be able to enter details on the day. It will be updated in real time so you will be able to see which pubs still need surveying. We will need the name of the pub, and then for each cask ale on sale that day we need the name of the beer; the brewery; % strength; and price of a pint. There will be a Notes section where you can add if the pub serves real cider and keg beer.

It would be great to see a few more faces on the crawls...

It would be great to see a few more faces on the crawls, and even better if we can prove yet again that Sheffield is unrivalled in it's range and quality of beer on sale.

The routes this year (and how to get to the starting points) are as follows:

Route A – Dore, Totley, Abbeydale Rd. Starting at Devonshire Arms, Dore. Route Leader: Mick Saxton. Buses 81, 82, 181, 272 and M17.

Route B – Norton Lees, Woodseats, Heeley, London Rd. Starting at The Abbey, Woodseats. Route Leader: Dom Nelson. Buses 18a, 24, 25, 43, 43a, 44, 44a, 75 and 76.

Route C – Ecclesall Rd. Starting at Hammer & Pincers. Route Leader: Alan Gibbons. Buses 4 and 88.

Route D – Deepcar, Bradfield, Stocksbridge. Starting at Rawson Spring, Hillsborough. Route Leader: Dave Pickersgill. Buses 31, 52, 57, 61, 62, 81, 82, 85, 97, 98 and tram.

Route E – Attercliffe, Meadowhall, Chapeltown. Starting at The Wagon & Horses, Chapeltown. Route Leader: Patrick Johnson. Buses 1, 1a, 29, 86, 265 or train to Chapeltown station.

Route F – Walkley, Commside, Crookes, Broomhill. Starting at Walkley Cottage. Route Leader: Paul Crofts. Buses 31, 52 and 95.

Route G – Lodge Moor, Nether Green, Ranmoor. Starting at The Three Merry Lads. Route Leader: John Beardshaw. Bus 51.

Routes H, I, J – City Centre (afternoon). Starting at Sheffield Tap, Sheffield Station. Route Leader: John Bratley and others. Buses 1, 1a, 4, 4a, 6, 7, 8, 8a, 18, 43, 43a, 44, 53, 56, 65, 71, 85, 95, 181, 215, 218, 271, 272, 273, 274, 275, X1, X17 or tram or train.

Routes K, L, M will be done in the evening after all volunteers meet at the Red Deer around 7pm.



Volunteers' Week

Volunteers' Week is an annual UK-wide initiative organised each year by the National Council for Voluntary Organisations (NCVO), and this year it runs from 1-7 June. The week is an opportunity to celebrate, thank and inspire the thousands of CAMRA members who give their time to the Campaign in a variety of roles.

There are many ways CAMRA members can get involved with their local branch as a volunteer. As well as the committee positions, members can help out by distribut-

ing magazines, working at festivals, scoring beer online, lobbying your local politicians or simply promoting the Campaign on social media. There's something to suit everyone!

If you would like to join CAMRA, simply go to join.camra.org.uk for more information. If you're already a member and want to get more involved, why not come along to our monthly branch meeting? June's meeting will be held at the Greystones on Tuesday 6 June at 8pm.



Beer Day Britain

The UK's national beer day, Beer Day Britain, celebrates its second anniversary on 15 June. For more info, go to

beerdaybritain.co.uk or follow @BeerDayBritain on Twitter.



Music in the Gardens

One of Sheffield's biggest open air concerts has teamed up with Bradfield Brewery to offer four day summer spectacular which will bring together, beers, bands and much more!

Taking place between 29 June – 2 July, Music in the Gardens is organised by the Rotary Clubs of South Yorkshire and will feature a diverse entertainment line-up including headliners The Zombies, famous for hits such as “She’s Not There” and “Tell Her No” (Thursday 29 June); the best known Beatles tribute band in the business The Bootleg Beatles (Friday 30 June) and Classic 70s Rock outfit 10cc (Saturday 1 July). The event will culminate on Sunday 2 July when Sheffield Philharmonic Orchestra and Unite the Union band come together to perform a “Night at the Movies” as well as brass band favourites, proms and fireworks spectacular.

To celebrate the twelfth anniversary of Music in the Gar-

dens, organisers have teamed up with Bradfield Brewery, who also celebrate their twelfth anniversary in 2017, to host a mini beer festival during the event.

Set to feature a variety of Bradfield Brewery’s popular farmers ales range, a special MitG Blonde will also be available exclusively during the event. For non-ale lovers, a range of wines, spirits, Pimms and soft drinks can also be purchased at the Bradfield Brewery bar, as well as a selection of hot drinks available from Café Carte. To soak up the abundance of alcohol on offer, food stalls including Spoilt For Choice Catering, Rotherham Hog Roast Company, Whirlow Hall Farm Trust and Our Cow Molly, will also take up residence at the four day festival.

Music in the Gardens organiser Phil Sherriff said: “We first started working with Bradfield Brewery five years ago and the beer and since then, the food and drink

offering for Music in the Gardens has really grown. I think when most people think of visiting a music festival, they automatically assume that it is going to mean paying exorbitant prices for a pint of flat lager and a cold hot dog. Instead we have teamed up with some great local food and drink producers which will all be available at sensible prices.”

Josie Gill, Director of Bradfield Brewery said: “2005 saw Bradfield Brewery open its doors for the first time, and coincidentally it was also the same year that Music in the Gardens was first held. To mark this year’s anniversary we will be selling MitG Blonde, a beer available exclusively during the festival. We were thrilled to support Music in the Gardens once again this year, the music line-up is always fantastic and there’s always a really pleasant and friendly crowd, resulting in a true party atmosphere. and we are delighted to be a part of this wonderful event once again.”

Tickets for Music In The Gardens are on sale now and can be purchased by calling **0114 22 33 777** (Mon – Fri 9am to 8pm), visiting **sivtickets.com**, from Sheffield City Hall Box Office (Monday – Thursday 9am to 2pm and Friday and Saturday 9am to 5pm) or from selected outlets across Sheffield, including Design Studio and Spoilt for Choice Catering (both on Ecclesall Road) and The Curator’s House Bistro in Sheffield Botanical Gardens.

BREWERY TOURS



APRIL 26 | MAY 31 | JUNE 28 | JULY 26 | AUGUST 30 | SEPTEMBER 27

BREWERY YARD

WELBECK, WORKSOP, S80 3LT

01909 512539

INFO@WELBECKABBEYBREWERY.CO.UK



@WELBECKABBEYBRY

Join one of our expert brewers for a guided tour around our traditional microbrewery. Tickets are £10 each and with this you will enjoy two pints of our lovingly hand crafted real ale, plus learn a little more about the ingredients and passion which go into each pint. Tickets can be purchased at Welbeck Farm Shop, Portland House in Sheffield, or from the brewery directly.

E-mail:
rutlandarms@hotmail.co.uk

Tel:
0114 2729003

THE RUTLAND ARMS

Whisky, Gin, Wine and a good time
5 Craft keg lines
7 Cask lines

Jukebox
Beer garden
Free function room
Artwork from local artists
Vegan & vegetarian food options

"IT'S PUB FOOD JIM...BUT NOT AS WE KNOW IT"



Heritage Open Days

As part of Heritage Open Days (HOD) 2015 and 2016, we led a Pub Heritage Walk. This will be repeated twice as part of HOD 2017 (7-10 Sep). This short walk takes in some of the entries in the CAMRA 'Yorkshire's Real Heritage Pubs' book. Also included are a number of 'try also' pubs which include aspects of architectural merit. Places are limited to 15 and may be booked via Eventbrite. The tours are both on Friday 8 Sep, 14:30 and 17:30 starts: tinyurl.com/k46742k tinyurl.com/kqmg6jz

For the past two years, the Sheffield Tap has also contributed to HOD. In 2016, there were 86 events in Sheffield, feedback being overwhelmingly positive from both organisers and the public.

Details on national website, heritageopendays.org.uk plus more on Facebook, [/sheffieldheritageopendays](https://www.facebook.com/sheffieldheritageopendays), and Twitter, [@sheff_hods](https://twitter.com/sheff_hods).

Following the success of Sheffield Beer Week, it seems appropriate for more local breweries and pubs to take part. Interested parties are encouraged to contact the local organisers at hods@sheffieldcivictrust.org.uk. Contributions could include a brewery visit, cellar tours, short talks, all providing excellent opportunities to spread the word about the best beer scene in the World.

This year, we hope to see lots of participation from the Sheffield beer scene!

Dave Pickersgill and
Liz Godfrey
(Sheffield Civic Trust)



TOM, BRIGITTE AND THE TEAM WELCOME YOU TO...

THE HILLSBOROUGH HOTEL

54-58 LANGSETT ROAD, SHEFFIELD, S6 2UB - 0114 232 2100 - [f](#) [t](#) [i](#)

6 REAL ALES

LOCALLY AND NATIONALLY SOURCED

HOME-COOKED, LOCALLY SOURCED

FOOD

QUIZZES

JIM'S GENERAL KNOWLEDGE
(EVERY TUESDAY)

MUSIC (FIRST THURSDAY OF EVERY MONTH)

LIVE MUSIC

JIM
MCDONALD &
DAVE YOUNG
SUNDAY JUNE 4TH

HAZEL
RICHINGS
SUNDAY JUNE 18ST



Abbeydale
BREWERY
— est. 1996, Sheffield —

ABBEYDALEBREWERY.CO.UK

T: 0114 281 2712 (BREWERY)
T: 0114 255 8917 (SALES)
UNIT 8 AIZLEWOOD ROAD, SHEFFIELD, S8 0YX

find us on...



There's nothing more social than beer.



Exit 33

Beer Matters has learnt of the loss of a long distance brewing friendship. Pete Roberts, founder of Exit 33 Brewing, has crafted a new beer named **Mad Skillz** in memory of his long-time friend Ben Flerchinger, who sadly passed away recently.

Their friendship also led to Exit 33 working on a collaboration brew with Portland-based brewers Lucky Labrador Brewing Company during Pete's trip to Oregon last year.

Pete explains, "I jumped at the chance as it was Lucky Lab that first inspired me to come home and open a micro brewery when I visited nearly a decade ago. The lead brewer Ben Flerchinger welcomed me with open arms and shared his passion for brewing great beer and we had a great time at the Oregon Brewers Fest meeting with other brewers. I learned last month that he had suddenly contracted pleurisy and unfortunately he passed away a few weeks later.

Lucky Lab Brew Co have brewed a beer to commemorate Ben and his contribution to the brewing scene and so have Exit 33. Ben had mad skills when it came to making great beer and so it was born. *Mad Skillz* is a 4.6% session pale ale hopped with a good variety of American hops. I'll miss our Facebook and Twitter chats. The world of brewing was better for him."



RIP Ben Flerchinger



Bradfield

Bradfield Brewery and Strideout Running Club are hosting a Beer Barrel Challenge on Saturday 10 June in aid of Prostate Cancer UK and Sheffield Children's Hospital. This multi-team activity event will see ten teams (8-man/mixed & female) racing over a four-kilometre course up a very big hill and down a very big hill. So what's the catch? The team will be carrying a 54 kg beer cask in a purpose-built carrier device, designed and built by the team. No wheels allowed! So not only do you need to be an able runner, you need strength and design skills too. The prize of 72 pints of Farmers Ales will be well worth the effort though! The event starts from 9am at Low Bradfield Cricket Club, finishing at the Bradfield Brewery Tap, The Nags Head at Loxley. Preregistration is required; please contact strideout@btinternet.com for further details.

A few weeks later, Bradfield Brewery will be featuring once again at Music in the Gardens. See p10 for details.



THE GARDENERS REST

THE FINEST COMMUNITY OWNED PUB IN SHEFFIELD

FINE ART REAL ALE BAR BILLIARDS LIVE MUSIC

JUNE MUSIC EVENTS

TUES 6TH: OLD TIME COUNTRY GROUP

WED 7TH: TRACEY'S SESSION - 8PM

FRIDAY 9TH: NOT THE JOHN KEANE SESSION
WITH JOHN AND MO - 8PM

SAT 10TH: M&J BUES

FRIDAY 16TH: WORRALL FESTIVAL FUNDRAISER
WITH LIVE MUSIC

TUESDAY 20TH: OLD TIME COUNTRY GROUP

WED 28TH: NOT THE JOHN KEANE SESSION
WITH JOHN AND MO - 8:PM

REGULAR EVENTS

PUB QUIZ EVERY SUNDAY AT 9:00PM

PUB GAMES EVERY THURSDAY 8PM - 10PM

COMING SOON! WATCH OUT FOR FRIDAY
PRESENTS LIVE MUSIC SPECIAL

THE GARDENERS REST
105 NEEPSSEND LANE
SHEFFIELD S3 8AT



/gardenerscomsoc



@GardenersComSoc

WWW.THEGARDENERSREST.COM



Steel City

Hot on the heels of all the collabs last month came a double brew weekend featuring guest brewer Jamie. Saturday was an Iron Brew (lawyers to note spelling!) sour at Lost Industry with Beer Ink, named **Do You Even Iron, Bro?**.

Then on Sunday a Chocolate Raspberry & Coconut Stout at Imperial entitled **Bunch of Cnuts**, with an imperial version **Abbott Does Cnutdown** on the minikit at 7.0% with added dealcoholised rum.

Those of a craft beer persuasion may have noticed a recent trend for 'murky' IPAs... so while brewing at Lost Industry Dave and Jimmy decided to take things to their logical conclusion and created IPA Jelly! They haven't figured out how to make it available on draught yet...

In other news, there are some things that one may only see once in a lifetime. Halley's Comet. A total solar eclipse. Dave Unpronounceable smiling. Now, we can add Steel City repeating a brew. Yet another collab, Dave is resurrecting 2011 brew **DILLIGAF** at Imperial.

Dave Szejewski

Fuggle Bunny

If you thought the Bunny was quiet, think again!

In the past three years our little Fuggle has gone from strength to strength. We have been very busy behind the scenes recently, planning and plotting, and the results are in. Firstly we have just launched our latest creation **Chapter 9 - LA LA Land** 3.9% ABV American Pale Ale. Bursting with tropical aromas with refreshing tastes of passionfruit and citrus, this thirst-quenching sessionable American pale has been created for the start of the summer season, light, refreshing and oh so quaffable.

Fuggle has a new arrival!

Yes, Fuggle is ready to welcome his new baby. We are very proud and hoppy to announce the birth of our newest project, our little ale house which is currently be-

ing preened and pruned as we speak, ready for opening shortly. The first of Fuggle's ventures into opening cosy little ale houses for people to come and enjoy fabulous award-winning ales, specialised spirits, and much, much more. This is an extension to our already popular and busy Fridays down at the brewery which have taken the community by storm. We have listened to our customers and stepped out of the box by creating the first chapter in Fuggle's new ventures. Keep checking our website and Facebook page for opening dates - you will not have to wait long. "Fuggle's Chapter One Bar", opening soon.

You can find Fuggle Bunny Brewhouse at Holbrook near Halfway, just off the main road towards Killamarsh. Bus 70/71 will drop you off nearby or it's a short walk from Halfway tram terminus.

THE BANNER CROSS

FUNCTION ROOM



AVAILABLE FOR
PRIVATE HIRE

TEL. 0114 2661479

www.thebannercross.co.uk
971 Ecclesall Road, Sheffield S11 8TN



The Banner Cross



Neepsend

It's been some time since we last contributed to *Beer Matters* but that's not because of a lack of news. In the months since our last contribution we've been fortunate enough to pick up a few awards, have increased our brewing capacity with new vessels, bought new casks and brewed dozens of new beers.

The latest brews include the return of a couple of old favourites: **Mosaic IPA**, which won a gold medal at last year's Steel City Beer & Cider Festival and showcases one of the most exciting US hop varieties around and **Osiris**, a **New Zealand Pale Ale** that was named Champion Beer of Stockport Beer Festival last year.

We've branched out a little and brewed a dunkelweiss called **Junkel**, which is fermented with a Belgian yeast for pronounced esters

on top of a satisfying nutty malt body. Other new beers recently have included **Helios**, a Centennial and Amarillo hopped golden ale, **Rufus**, a red ale hopped with Styrian Wolf, **Mala**, a 3.8% ABV spring pale ale and an oatmeal stout. Keeping the new beers coming, an IPA brewed with Vienna malt is next on the agenda.

Keep your eyes peeled for a special event featuring some new and exciting beers at the Sheaf View on 20 June to celebrate the brewery's second birthday and the Sheaf's seventeenth since re-opening and watch this space for more new beers coming up. It's probably about time we played around with something fruity again, which we haven't done since our passion fruit pale collaboration brew with Steel City in February...

Gavin Martin

Abbeydale

Firstly we would like to say a MASSIVE thank you to everyone who came down and supported our first public event at the brewery last month, we hope you enjoyed yourselves and drank some wonderful beer! For those of you unable to come, we hope to see you soon at SunFest, which this year is running from 6-9 July at The Rising Sun, Nether Green. The brewers loved brewing the exclusive one off beers for the party, and will definitely be doing some more for SunFest. To be kept right up to date with all goings on at the brewery, and both pubs, please head over to abbeydalebrewery.co.uk and sign up to our newsletter.

Right, let's talk beer that will be hitting the pubs this month! First off we have the third in our limited release IPA series, so **Voyager #3 - Galaxy, Lemon Drop, Centennial** is coming in at 5.6% and

will be packed full of hoppy goodness, deep citrus flavour and a nice bitter finish. We are planning on releasing this in 330ml cans as well (fingers crossed), so the usual fine bottle shops and off-licences will be stocking this now!

We have the annual return of **Belfry** but with brand new artwork! So brand new in fact that as we go to print, it's not quite ready! Belfry is a firm favourite of ours and this single hopped Cascade beer really does signal the start of the summer months and the cricket season being in full swing!

As you will be well aware by now, we gave all our core range beers and most of our specials a face lift this year, so we thought it appropriate to bring back **Dr Morton's Branding Irony** with original artwork of course! A typical Dr Morton's beer, this is pale, nicely hopped and of course, 4.1% ABV.

Back to the Brewers Emporium and we have the second in the speciality grain series with **Reaper #2 - Lemongrass and Pepper Wit**. This light and fruity Belgian style Wit beer will be enhanced by the addition of lemongrass and peppercorns as they support those classic Wit estery flavours.

Cosmology at 5.0% is a strong premium blonde bitter with tropical fruit punch flavors dominating including pineapple and passionfruit.

Until then, cheers and beers!



Welbeck Abbey

Something new and exciting will be coming from Welbeck Abbey Brewery this spring, as for the first time since 2011 the brewery will be boasting a fresh new look.

Lovers of their heritage-inspired ales need not fear as their range will be remaining the same, just with a more modern look. As part of the re-brand, and due to popular demand, the brewery have also decided to add the 4.1% ABV lager-style pale ale **Kaiser** to their core range.

Welbeck Abbey Brewery was established in 2011 and has quickly become one of the country's leading microbreweries, brewing roughly 15,000 pints a week. General Manager Claire Monk says: "We felt it was time to redefine our brand. We always aim to produce the highest quality

beers with a rich heritage behind them, but having been quiet about these stories in the past, our new image really focuses on the tales and legends behind each beer."

Along with redesigning their packaging, the brewery has also launched a new and interactive website. "This new website will give drinkers an insight into stories from the estates history, all of which we have used for inspiration when creating our beers", says Claire.

You may have already caught a glimpse of the new branding across the brewery's cask or bottle range down at your local, but if not and you're anxious to get a sneak peek then they invite you to visit their new website at

welbeckabbeybrewery.co.uk.



Stancill

Stancill Brewery to commemorate Armed Forces Day with new special

Veterans from HMS Sheffield are set to benefit from Stancill Brewery's latest summer special, which has been brewed to mark the 35th Anniversary of the sinking of HMS Sheffield.

Crew members of the destroyer gathered at the brewery in May as part of weekend dedicated to remembering the sinking of the ship which saw 20 people lose their lives, when the ship was hit by an Argentinian air strike on 4th May 1982.

Servicemen returned to Sheffield to take part in a special memorial service held at Sheffield Cathedral and to unveil the new beer produced by Stancill at part of this year's Penistone Armed Forces day.

Named **Shiny Sheff** in honour of the nickname given the battleship, the 4.0% golden ale is an easy drinking golden

ale which feature fresh citrus and floral notes, resulting in a refreshing, easy drinking session beer.

There have been three battleships bearing the name HMS Sheffield. The first was built in 1936 and used during the Second World War. Unusually the ship featured stainless steel fittings built in Sheffield, rather than the standard brass ones used at the time in an attempt to reduce cleaning duties. All ships bearing the name HMS Sheffield include fixtures and fittings produced in the steel city, leading to the nickname Shiny Sheff.

Thomas Gill, Managing Director, Stancill Brewery said: "We were approached by organisers of Penistone Armed Forces day to run a bar at the event, who wanted to do something special to remember those who lost their lives on HMS Sheffield in 1982. As well as supporting the event on the day, we wanted to go one stage further and proceeds from every cask of

Shiny Sheff sold will also be used to support the event.

"It was truly humbling to meet some of the crew who survived the attack on HMS Sheffield, and based on the positive feedback we received from the crew members I can't see the beer being around for long!"

Stancill turns to the Dark side

As regular readers of beer matters will know, Stancill Brewery has recently given a rare opportunity for one home brewer to live out their dreams and work with head brewer Dean Pleasant to see their beer on the pumps in pubs in Sheffield.

Demand for the competition proved to be high, and after drawing up a shortlist featuring twenty of the city's finest home brewers, ten were invited to submit beer to the final judging panel which took place at the Horse & Jockey, Wadsley. Each beer was judged based on originality, flavour, suitability for production and innovation, with the top prize being scooped by John Kendall, who works as a team manager at Northern Rail.

John began brewing just two and half years ago when his brother-in-law gifted him a brew kit. The kit helped to fire John's imagination and he quickly progressed to whole grain brewing. His winning beer, **The Dark One** is a black IPA was one of the first recipes he produced and combines hints of dark



chocolate and liquorice with tangy grapefruit and lychee aftertaste.

After proving that he was top of the hops, and impressing a tasting panel comprising of industry experts and representatives from Stancill Brewery, John will work with Stancill Brewery, brewing the beer inside the brewery.

Brewing is expected to take place soon and the beer available later in the summer.

STOP PRESS

Stancill Brewery has acquired its first pub in Sheffield's city-centre. It is expected to open its doors in June. More details to follow.



Blue Bee

As we head towards the longer nights and hopefully better weather we have brewed a couple of session pale ales perfect for the sunny weather. First up is **Cascade Pale** 3.9% brewed with the classic American hop Cascade; the hops give citrus and floral flavours which lead to a dry crisp refreshing finish. Secondly we have managed to get our hands on some Nelson Sauvin Hops for the first time in around three years. With these the first beer to come out of the

brewery will be **Nelson Pale** 3.6%, this New Zealand hop gives bags of grapefruit flavours and sure is not to lack in taste even at this beer's low ABV.

For those who like beer a little stronger we are brewing **NZ IPA** 6.0% again but this time with a different concoction of hops. This version will bring together: Pacific Jade, Motueka, Waimea and Rakau to give a sharp citrus flavour with pine like notes. Along with this we are going

a bit mad with hops from New Zealand so June's single hopped IPA will be **Rakau IPA** 5.0%.

Also look out for **American 5 Hop Version 21** 4.3%, which at the time of writing this was being brewed and set to include Columbus, Sorachi Ace, Comet and two other US hops. Also in the pipeline is the next in the Geek series using all Mosaic hops and a German hopped pale combining Magnum, Huell Melon and Manadriana Bavaria.



STANCILL

BREWERY

Stancill have a reputation for award-winning craft ales, brewed with passion and in the pursuit of perfection. We believe our new look and range of pump clips amplify these core qualities, so look out for these wherever good beers are sold.



☎ Beer Line 0114 275 2788 / 07809 427716 ☎ www.stancillbrewery.co.uk

f facebook.com/stancillbrewery t twitter.com/stancillbrewery



**TEN HAND PUMPS • CRAFT BEER • GINS/ WINE
LIVE ENTERTAINMENT • AND MUCH MORE!**

20% CAMRA DISCOUNT ON ALL STANCILL BEERS AVAILABLE AT OUR BREWERY TAPS

NORFOLK ARMS

**8 Penistone Road • Grenoside
Sheffield • S35 8QG**

Tues: Quiz - 9pm

Weds: Pizza, Pints & Prosecco 4-9pm

Fri: After work club 4-7pm

Sat: Nibbles at the Norfolk 4-10:30pm

f facebook.com/norfolkarmsS35

📷 @norfolkarmsS35



HORSE & JOCKEY

**250 Wadsley Lane • Wadsley
Sheffield • S6 4EF**

Mon: Jam night - 8pm onwards

Tues: Quiz - 9pm

Thurs: Pizza, Pints & Prosecco 4-9pm

Fri: After work club 4-7pm

Street food most Saturdays

Mid Month Music: see facebook for details

f facebook.com/horsejockeyS6

📷 @horsejockeyS6



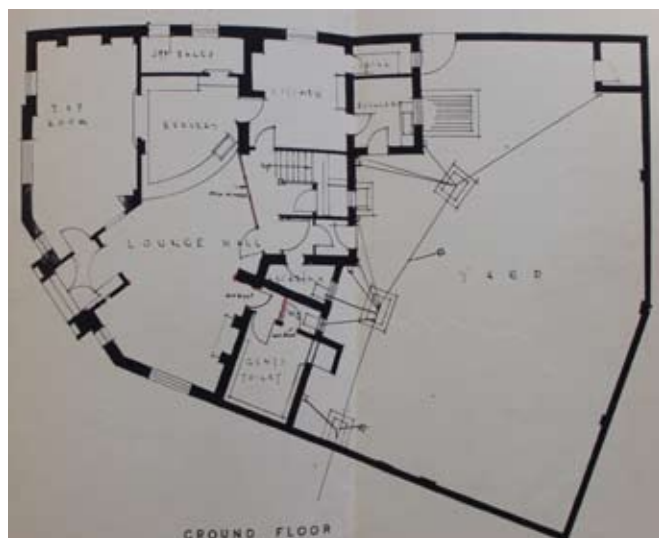
Heritage pubs - Rutland Arms

The Rutland was built, in 1936, on the site of a previous pub. Plans from the time (Wm. Fenton, Architect, Sheffield for Duncan Gilmour and Co.), indicate that the footprint of the new pub moved about 10 m back, thus allowing the corner between Brown Street and Furnival Street to take up its current position. The new pub had a corner entrance, a vestibule leading into a public bar with a service bar. Before the Public Bar, on the right is a 'Smoke Room,' and on the left is a 'Tap Room,' both fronting onto the street. Upstairs is a club room. Off sales are available from an entrance on Arundel Lane, behind the 'Service Bar' (left rear). The remnants of this entrance can still be seen under the current-day window which is to the right of the 'Off sales' window. To the right of the 'Smoke Room' are both male and female 'Urinals.' The fact that these are not situated in the yard is an indication of the relative importance of this new build.

1952 plans (J.Foster, Architect for Duncan Gilmour and Co.) show the opening out of the public bar and smoking room into a larger Lounge Hall – see image. 1988 (L.B.Percival, Architect for Josuha Tetley and Son Ltd.) saw the lounge and tap room merged and the reconfiguration of the bar into its current position.

In addition to a considerable amount of Art Deco-style interior glasswork (installed in 1952) and eight original exterior windows (including 'Smoke Room' (2) and 'Off Sales'), the Rutland has a very impressive tiled exterior. 'DUNCAN GILMOUR & Co. LIMITED. RUTLAND ARMS.'

Dave Pickersgill





SAXBOB



PRESENTS



TRAMLINES BLUES & ALE STAGE

FRIDAY 21 & SATURDAY 22 JULY 2017

THE LAST WALTZ IN THE COURTYARD

**BBQ +
VEG FOOD**

FRIDAY 21 JULY

18:00-23:30

Vegas Six
Highway Child
James Taplin
& Mick Holmes

SATURDAY 22 JULY

13:00-23:30

Downtown Roots
Do\$ch
Love Me Blues
Black Thunder Revue
Nick Bennett Trio
M&J Blues
Blind Papa Stumblin'

**FREE
ENTRY**
REAL ALE
COURTYARD BAR



C.A.D.S., 7 SMITHFIELD, SHALES MOOR, SHEFFIELD S18 7AR, UK

WWW.CADS-ONLINE.CO.UK



ACV and planning permission update

Both Carbrook Hall and the Cherry Tree (Carterknowle Road) have successfully gained Asset of Community Value (ACV) status. Thank you to all involved in these applications.

In late April, Royal Assent was gained for the Neighbourhood Planning Bill. This removes permitted development (PD) rights for the change of use or demolition of pubs, a measure to close a planning loophole in England which has allowed pubs to be demolished or converted without a planning application. The decision will not prevent the development of pubs, but will require developers to apply for planning permission.

Dave Pickersgill
Pub Heritage Officer

Inn Brief

The **Punchbowl** in Crookes has re-opened after being closed for three weeks following the demise of Reet Ale Pubs. Ed Phillips has stayed on as manager of the pub, which is now owned by the Greene King brewery.

Couch coffee shop on Campo Lane has installed a hand pump. The first cask ale on offer was Kelham Island Brewery's Pale Rider.

We reported last month that the **Old Queen's Head** had introduced a guest ale pump. A second guest pump has now been installed alongside the regular beers, allowing the pub to offer a Thwaites seasonal beer alongside a guest ale.

The **Bull's Head** on Fulwood Road is currently being looked after by the manager of the nearby Ranmoor Inn after a brief closure.

Visitors to the first ever beer festival at the **Abbeydale Picture House** made their way through 21 casks of beer in four days. As well as ale, drinkers were treated to food, debates, live music and an antiques market.

The **Three Cranes Hotel** on Queen Street is temporarily closed.

The **Anvil** at Stannington has been put up for sale. The pub currently serves four real ales, and has a quiz night on Tuesdays.

The **Mount Pleasant** on Derbyshire Lane has recently been refurbished. It retains its layout of a traditional two-room local offering a good range of real ales.

The **Closed Shop** will be open again from Thursday 11 May at 4pm. The pub is now being funded by the community on a short-term tenancy basis while the long-term lease is being negotiated by a Sheffield-based brewery. Most of the old staff are back and they have eight real ale pumps sourced mainly from SIBA. Food will also return when the kitchen is back up and running.



The **Wellington** in Shalesmoor is very pleased to announced the return of its Tuesday night quiz, starting at 9pm, with the first one being Tuesday 16 May. The new quiz also has a new host, Andy, who has hosted Andy's Quiz at both the Rutland Arms and The Closed Shop over the last 7 years and is now bringing it to The Wellington. Expect the usual array of fun questions, bonus rounds and great prizes, mainly in the form of free beer! As well as the quiz the usual variety of real ales will be available for quizzers to enjoy. . On public transport, you can take the Blue or Yellow tram to Shalesmoor, or the 57, 61, 62, 81, 82 and 85 buses will all get you there.

THE BEER ENGINE

**CRAFT BEERS
SPIRITS
FOOD**

17 CEMETERY RD

www.beerenginesheffield.com

  BeerEngineSheff



Stockport and its Slope

The trip this month was the relatively short one to Stockport, about 40 minutes away on the train. Arriving mid-morning and armed with a Stockport PLUSBUS ticket the first journey was to Cheadle Hulme where I had to purchase an off-peak day return to Wilmslow.

On arrival, turn right out of the station forecourt and a short walk brings you to the **Brewhouse & Kitchen** (pictured). Six of their in-house brewed cask ales were available and I sampled an *Easter Chocolate Stout* (4.5%) and the *Unite Local Saison* (4.3%). The saison was not to my taste but the chocolate stout made up for that.

Less than five minutes' walk away on the main pedestrianised area is the **Old Dancer** (a CAMRA *Good Beer Guide* 2017 entry). Five cask ales were available and I chose *Track El Capitan IPA* at 5.7%.

Train and bus took me back towards Stockport where I then made a detour to visit David Wild. Some of you may remember David as a regular

Thursday visitor to Sheffield, where he enjoyed his Steak Pie in the Fat Cat. Unfortunately David is now virtually confined to his bungalow in Bredbury following a stroke, but still enjoys hearing about the local beer scene.

Back into Stockport now and to Wellington Road North, which is known as the Stockport Slope. I must say though, compared to some of the hills of Sheffield, I would liken it more to a slight incline rather than a steep hill! The pubs in this area are, however, very good. My first stop was **The Magnet** (GBG 2017 listed) where from their extensive range I sampled *Fixed Wheel Single Speed Cluster* (4.5%), *Manchester Brewing Co Some Might Say Session IPA* (4.4%) and *Track Valpo Red Ale* (5%).

Further up the Slope is **The Hope** (GBG 2017 listed and the home of Fool Hardy Ales). A couple of their own ales were sampled here, *Retro Chique* (3.9%) and *Ritual* (4.7%), followed by *Cocksure Brewing Company P'Alé* (4.5%).

Other pubs in this area could have been visited but I chose to travel across Stockport to the Market Place area and started at Robinson's **Bakers Vaults** (GBG 2017 listed). A range of Robinsons and guest beers are available and I had *Box Steam Soul Train* (4.7%). Crossing the Market Square brings you to the **Remedy Bar and Brewhouse**, a relatively new pub which recently held a very successful beer festival. Among the guest beers, only one brew from their own in house plant (which is clearly visible from inside the bar) was available and duly tried. It was a very smooth and drinkable *Laevis Dark Mild* (3.7%).

Heading back towards the station is the **Calverts Court** (Wetherspoons) where *Wolf Woild Moild* (4.8%) was sampled.

The final call was to the **Petersgate Tap**, a relatively new establishment in the micro pub style. *Rammy Craft Liquorice Root Stout* (4.6%) was sampled which was a smooth tasty end to my visit to Stockport.

On arrival back in Sheffield, there was just time for a swift half of Thwaites Nutty Black in the **Old Queens Head**. Beer quality throughout had been very good and there are still plenty of pubs to visit in Stockport on a future Grand Day Out, maybe even next month.

Andrew Morton

Food Served
Monday - Saturday
12-10pm
12-8pm Sunday



Bar Open
Monday - Friday
12-11pm
Friday & Saturday
12-11.30pm

Traditional Pub & Dining Room

Showcasing 13 cask ales, Craft Kegs, a new improved Spirit selection
and a wine list curated by Starmore Boss
Children welcome until 7pm • Dogs welcome in the bar area

"Expect Elevated traditional British food with a twist, locally sourced products throughout. A brand new wine menu curated by Starmore Boss, and a wide variety of both cask and craft beers."

The Rising Sun

471 Fulwood road | S10 3QA | 0114 230 3855



www.risingsunsheffield.co.uk

📍 The Rising Sun 📷 @risingsunshef



DEVONSHIRE CAT

**NOW OPEN UNTIL
2AM EVERY NIGHT**

28 lines, 12 hand pulls, and a new cocktail menu

Fresh locally sourced British menu

Newly refurbished bar with free hire space

Over 200 bottled beers and a dedicated GLUTEN FREE cask line



Food served daily
Monday - Saturday 12-9pm
Sunday 12-8pm

JOIN US BETWEEN
4-7PM EVERY DAY
£2.90 PINTS OF HEATHEN
AMERICAN PALE ALE
£2 OFF ALL COCKTAILS
LARGE GLASS OF WINE FOR
THE PRICE OF A SMALL

🐾 devonshirecat 📺 facebook.com/devcat 📷 thedevonshirecat

Find us a whisker away from Division Street at 49 Wellington Street. S1 4HG (0114) 2796700



PotM May 2017

On 9 May, Sheffield & District CAMRA members descended on the **University Arms**, Brook Hill, for the presentation of the Pub of the Month award for May 2017. The evening was a double celebration as the pub was also presented with its Asset of Community Value (ACV) certificate from the Department for Communities and Local Government. After a

Pub of the Month June 2017

Our Pub of the Month awards are voted for by our members and are designed not as a competition between pubs as such, more to celebrate those pubs and bars around our area that serve great real ale in a friendly and comfortable atmosphere, day in, day out.

This month's winner, the **Broadfield** on Abbeydale Road, was built in the 1890s in the heart of Sheffield's Antiques Quarter. In 2011, it became part of what is now the True North brewery. The pub was refurbished in 2012 and since then it has strived to serve quality ales and good food in a friendly atmosphere. The Broadfield last won our Pub of the Month award in May 2015.

There are nine cask ales available, including three regular True North beers alongside Abbeydale Moonshine, plus five guest ales. The beer

garden is a delightful place to enjoy a pint or two on a warm summer's day. Alongside the beers, a wide selection of whiskies and gins are also offered, and the food menu includes award-winning pies and sausages, and everyone's favourite - a proper Sunday roast.

We are heading to the Broadfield to present their certificate on Tuesday 13 June from 8pm, and everyone is welcome to come and join us for a celebratory pint. The pub can be found at 452 Abbeydale Road, Sheffield, S7 1FR. Buses 10, 10a, 75, 76, 86, 96, 97, 98 and 218 will all get you there.

CAMRA members, don't forget to vote for your next pub of the month! This can be done either through our website or at any branch meeting.

Club of the

We are pleased to announce that **Stocksbridge RUFC** has won this year's Club of the Year award. As well as the rugby, the clubhouse hosts regular events and has become well known in the area for the quality of beer available. The bar offers three regular real ales; Hobboblin, Bradfield Farmer's Blonde and Farmer's Brown Cow. Seasonal Bradfield brews are also available.

Last year saw the club host its first ever beer festival, which is set to return this year. The festival will see eight additional real ales on offer. The presentation of the award has been timed to



7 presentation

long campaign, the University Arms recently became the ninth Sheffield pub to receive the ACV accolade.

Social Secretary Patrick Johnson (centre) presented pub manager Ashley Shephard (left) and bar manager Danny Vickers (right) with the awards, which we are sure will be displayed in pride of place for years to come!

e Year 2017

coincide with the beer festival on Saturday 17 June. Sheffield & District CAMRA members are invited to come along from 4pm onwards for a presentation around 5pm. Of course, if you're keen why not head down a bit earlier and sample some of the many beers on offer!

Stocksbridge RUFC can be found at 634 Manchester Road, Stocksbridge, Sheffield, S36 1DY. Bus 57 from Sheffield will get you to within a couple of minutes' walk of the ground. You can also use the SL1/SL1a Supertram link buses departing from Mid-blewood tram terminus.



Issue 475
June 2017

Vote for Pub of the Month

Our Pub of the Month award is a bit of positive campaigning, highlighting local pubs that consistently serve well kept real ale in friendly and comfortable surroundings.

Voting is your opportunity to support good, real ale pubs you feel deserve some recognition and publicity.

All CAMRA branch members are welcome to vote at branch meetings or on our website.

It's not one pub against another, simply vote YES or NO as to whether you think the pub should be PotM. If

we get enough votes in time we will make the award. Nomination forms are available at branch meetings and on the website. The pub must have been open and serving real ale for a year and under the same management for 6 months.

Winners compete alongside our *Good Beer Guide* entries for branch Pub of the Year, the winner of which is entered into the national competition.

The list of nominees is below and includes which buses to take if you fancy a trip to try them out.

Broomhill Tavern

Broomhill (bus 120)

Doctors Orders

Glossop Road (buses 6, 120, 271)

Nottingham House

Broomhill (buses 51, 52, 52a, 273, 274, 275)

Stags Head

Sharrow (buses 4, 4a)

University Arms

Brook Hill (buses 51, 52, 52a, 273, 274, 275, Blue/Yellow tram)

Wisewood Inn

Loxley (buses 31, 31a)

Vote
online
now!

sheffieldcamra.org.uk/potm

Festival guide

May

Lincoln CAMRA

Thu 25 – Sat 27 May

100+ real ales plus cider, perry, bottled beers, food and music in Lincoln Drill Hall. See www.lincolncamra.org.uk for more details.

Lees Hall Golf Club

Fri 26 – Sun 28 May

Their annual festival. 12 cask ales, plus craft beer, cider and gin. Live music and food throughout the weekend.

Hope Valley

(Old Hall Hotel)

Fri 26 – Mon 29 May

The Old Hall Hotel in Hope holds one of their regular bank holiday weekend beer & cider festivals featuring a marquee with a range of up to 50 real ales and ciders plus live music, souvenir glasses and food in addition to the normal pub offering.

Buses 272/273/274 from Sheffield passes right outside the hotel (bus stop around the corner) or Hope railway station is about 10-15 minutes walk away.

hopevalleybeerfestival.com

Sheffield Food & Drink Festival

Sat 27 – Mon 29 May

Pop up kitchens, street food traders, food market and a beer tent in Sheffield City Centre plus events in venues around the City.

Spring Loaded

Sun 28 May

Head to the Brothers Arms for a day of beer, music and food. Live music from a variety of local bands and artists from 12 noon onwards.

The Brothers Arms can be found at 106 Well Road, Sheffield, S8 9TZ.

Stockport CAMRA

Thu 1 – Sat 3 Jun

150+ real ales plus cider, world beers, food, entertainment and more at Edgeley Park football ground.

stockportfestival.org.uk

Castle Rock Yard Party

Wed 31 May – Sat 3 Jun

Castle Rock Brewery in Nottingham celebrate their 40th birthday this year and are putting on a beer festival and yard party showcasing their own and guest beers including some new beers brewed for the occasion along with food and music. The event also incorporates their annual beer of the year awards which are voted for by the customers in the pubs owned by Castle Rock.

Tickets and information from castlerockbrewery.co.uk. The brewery is a short walk from Nottingham rail station, regular direct trains from Sheffield operated by Northern and East Midlands Trains.

June

Belper Goes Green

Fri 2 – Sun 4 Jun

Amber Valley CAMRA

provide a real ale and cider festival at the Rugby Club as part of a wider green festival featuring food, entertainment, stalls and activities

transitionbelper.org



3 Valleys

Sat 3 Jun

This popular annual event across a dozen venues in the Dronfield area with free buses from Dronfield station is back. All venues offer free entry and are a mixture of pubs and clubs in town, suburban and rural locations. Hop on and off the buses to try the different beers, ciders, food, music and atmospheres. Some venues will have outside bars, food stalls and more in addition to their normal bar. The buses run from 12-9pm.

Extra trains will be calling at Dronfield station this year.

3valleys.org.uk

Kelham Island Tavern

Thu 22 – Sun 25 Jun

Our Pub of the Year hosts their 10th summer festival



Sheffield & District Pub of the Year



10th Anniversary of the Sheffield Flood

BEER FESTIVAL

22ND-25TH JUNE

Festival guide

and we will be presenting their award at 9pm on the Thursday.

Worrall Festival

Fri 30 Jun – Sat 1 Jul

The annual Worrall Festival returns for another year. Past years have seen a plethora of real ales from local Breweries such as Blue Bee, Bradfield, Kelham Island, Little Critters, Fuggle Bunny and more. There will also be plenty of live music to enjoy.

Worrall Festival is held in the grounds of Worrall Memorial Hall, Towngate Road, Worrall, S35 0AR. The number 57 bus from the city centre runs through Worrall; alight at the Blue Ball pub and head left up Towngate Road. Friday admission is by ticket only from 7pm, while Saturday is open to all from 4pm.

Wortley Mens Club

Fri 30 Jun – Sun 2 Jul

Despite the name all are welcome! The beer festival is their 5th annual event and runs from 5pm Friday and from midday Saturday and Sunday with a range of 60 cask ales, 30 ciders, craft keg beers, food stalls, live music and kids zone. Bus 29 (Chapeltown-Holmfirth) goes to Wortley.

July

Sunfest

Wed 5 – Sun 9 Jul (TBC)

This annual beer festival at the Rising Sun pub at Nether

Green in Sheffield sees the car park closed to make way for a tent filled with around 100 guest beers on cask plus a selection of craft beers on keg along with cider and food. There is also music and stalls. Meanwhile inside the pub all the handpumps on the bar are given over to Abbeydale Brewery, who own the pub, showcasing their range including a charity beer brewed for the festival. Buses 86a and 120 stop right outside the pub.

risingsunsheffield.co.uk

1st National Woodfest

Thu 6 – Sat 8 Jul

This is being held at the Horse & Jockey pub in Castleford (between Wakefield and Leeds if you catch the Sheffield to Leeds via Barnsley stopping train) and organised by members of the Society for the Preservation of Beers from the Wood showcasing a selection of beers served from wooden casks. Capacity is limited so it is advisable to book tickets in advance online at woodfest2017.com.

Bassetlaw Beer Festival @ The Grafton Hotel, Worksop

Fri 7 – Sun 9 Jul

3rd annual summer festival at the Grafton Hotel, 5 minutes' walk from Worksop station, with 24 real ales, ten ciders and live music. Free entry.

Gillyfest

Sat 15 Jul

Gillyfest at the Sportsman Inn, Redmires Road, Lodge Moor, returns for its fifth year. Festivities start at 1:30 pm and visitors can look forward

to live music, animal attractions and local food. Admission is by donation.



Tramlines

Fri 21 – Sun 23 Jul

This music festival sees a massive party take over central Sheffield. The main official stages that a paid for wristband get you into are Ponderosa Park, Devonshire Green and Endcliffe Park; however the beer lover will be more interested in the fringe going on in pubs, bars and other venues with many real ale serving pubs putting on live music and DJs.

As usual of special note is the Blues stage organised by Saxob, this will be the final year of Tramlines Blues being held at the CADS venue near Shalesmoor before it closes. This free admission event will see a programme of bands on Friday night and Saturday afternoon/evening, a real ale bar in the courtyard, a BBQ and veggie food stall.

A New Book

about Sheffield pubs

Full colour book with over 100 public house images. All now closed and no longer serving Sheffield drinkers.

This 116 page, A4 Book, is available from:
WATERSTONES, SHEFFIELD SCENE, W. H. SMITHS
or receive **POST FREE** by emailing:
mliversidge@pickards.org.uk

An ideal
Father's
Day Gift

@ only £10.00



Sheffield
Public Houses



Closing
Times



as they were **THEN** ...
... and what's there **NOW**



Branch diary

Sheffield

Info and bookings:

social@sheffieldcamra.org.uk

RambAle

11:20am Mon 29 May

This month we are walking in the Hope Valley, taking in the beer festival at the Old Hall Hotel in Hope along with a few other good country pubs.

We catch the 273 bus (TM Travel) from Sheffield Interchange at 11:20 out to the Ladybower Inn for a walk to Anglers Rest at Bamford (or come out on a train and join us there) via the Yorkshire Bridge Inn. After a drink we shall walk over via Thornhill to

the Cheshire Cheese at Hope, before joining colleagues at the Hope Valley Beer Festival at the Old Hall Hotel. Back via either train or 272 bus from Hope.

Hope Valley train crawl

12pm Mon 29 May

After a few years doing it on the 272 bus we are back on the train for our traditional bank holiday excursion into the Peaks! We catch the 12:14 train from Sheffield (also picks up at Dore & Totley at 12:21) and hop on and off visiting pubs in Grindleford, Hathersage, Hope and Edale as time allows, including the Hope Valley Beer & Cider Festival at the Old Hall Hotel in Hope, where it is intended to meet up with the group doing the RambAle.

To cover the train travel simply buy an off peak day return to Edale (which allows you to break journey at intermediate stops) costing £8.60. (note Senior Citizens without a railcard may find it cheaper to buy a concessionary Derbyshire Wayfarer pass for the day).

Pub Design Award

4pm Wed 31 May

The Ship Inn at Shalesmoor was highly commended in the National Pub design awards for its refurbishment. As the pub's manager couldn't make it to the awards ceremony in London, our branch Pub Preservation Officer collected the certificate and will be presenting it at the Ship on the afternoon of 31st May - all welcome to come along.



**TRY A TASTE
of
TRADITION**

Farmers Ales from Bradfield Brewery

On-Site Brewery Shop open Monday - Saturday 10am until 4pm.

info@bradfieldbrewery.com • 0114 2851118 • www.bradfieldbrewery.com

Bradfield Brewery Limited, Watt House Farm, High Bradfield, Sheffield, S6 6LG

Visit our page on Facebook or follow us on Twitter for the latest news and offers.

Real Ale, Real Food & Real Fires

The Old Hall Hotel

A Traditional 16th Century Coaching Inn
Market Place, Hope, Hope Valley, Derbyshire S33 6RH



f /TheOldHallHotel

@oldhallhope

Homemade Food Served All Day | 6 Cask Marque Ales
Outstanding B&B | Roaring Open Fires
Muddy Boots & Dogs Welcome | Friendly Atmosphere



www.oldhallhotelhope.com

01433 620160

info@oldhallhotelhope.com

A Pub Done Different

THE PEAK HOTEL

The Peak Districts' Eccentric Alehouse
How Lane, Castleton, Hope Valley, Derbyshire S33 8WJ



f /ThePeakHotelCastleton

Find us on TripAdvisor

@peakcastleton

Homemade Food Served All Day | Outstanding B&B
5 Cask Marque Ales & Large Selection of Craft Bottles
Muddy Boots & Dogs Welcome | Roaring Open Fires



WWW.THEPEAKHOTEL.CO.UK

01433 620247

INFO@THEPEAKHOTEL.CO.UK

Branch diary (continued)

Branch meeting

8pm Tue 6 Jun

Members get together to discuss branch business; share pub, club and brewery news and catch up on what is happening in the campaign. Venue is the Greystones.

Annual Beer Census 2017

12pm Sat 10 Jun

Our annual Beer Census returns as we aim to collect as much information as possible about the real ale available in the UK Beer Capital. Daytime routes start at 12pm from various locations and we convene at the Red Deer on Pitt Street in the early evening to hand in completed forms and visit the last few pubs together. More information on page 8 and the website.

Pub of the Month

8pm Tue 13 Jun

Our June winner is the Broadfield on Abbeydale Road. Join us for the festivities as we present their certificate.

Club of the Year

4pm Sat 17 Jun

Stocksbridge RUFC has been awarded our Club of the Year, and we have timed the presentation to coincide with the club's beer festival. We are planning to arrive from 4pm for a presentation at 5pm.

The number 57 bus from Sheffield Interchange will get you to within a couple of minutes' walk of the ground, as will the SL1/SL1a Supertram link buses from Middlewood tram terminus.

Festival planning meeting

8pm Tue 20 Jun

We continue planning our 43rd Steel City Beer & Cider Festival. If you are interested in being part of the committee or helping out in any way please come along to Shake-speares on Gibraltar Street.

Pub of the Year presentation

8pm Thu 22 Jun

We are heading down to the Kelham Island Tavern to present our Pub of the Year award. This has been timed to coincide with the pub's beer festival. Arrive from 8pm for a presentation at 9pm.

The Kelham Island Tavern can be found at 62 Russell St. Buses 57, 61, 62, 81, 82, 85 and 86 all stop nearby on the A61, or Shalesmoor tram stop is just a few minutes' walk away.

Beer Matters distribution

8pm Tue 27 Jun

If you have signed up for a magazine delivery run, come along and collect your supply of the July issue and enjoy a beer with other distributors.

If the pubs you frequent are in our area but don't receive copies, why not sign up as a distribution volunteer?

Please note the distribution arrangements have changed,

if you deliver *Beer Matters* please contact our new co-ordinator Andy Shaw to let him know where you deliver to and get details of the new distribution venue.

Committee

Mick Saxton

Chair

chair@sheffieldcamra.org.uk

Louise Singleton

Vice Chair

Beer Festival Organiser

festival@sheffieldcamra.org.uk

Paul Crofts

Secretary

Press Officer

Deputy Festival Organiser

secretary@sheffieldcamra.org.uk

Andy Cullen

Treasurer

treasurer@sheffieldcamra.org.uk

Dave Pickersgill

Pub Heritage Officer

pubheritage@sheffieldcamra.org.uk

Patrick Johnson

Social Secretary

social@sheffieldcamra.org.uk

Dominic Nelson

Beer Matters Editor

beermatters@sheffieldcamra.org.uk

Poppy Hayhurst

Social Media Coordinator

Sarah Mills

Real Cider Champion

Alan Gibbons

Pub of the Year and Good

Beer Guide Coordinator

potm@sheffieldcamra.org.uk

Mark Boardley

Pub Campaign Coordinator

pubscampaign@sheffieldcamra.org.uk

CAMRA (National)

230 Hatfield Rd, St Albans,

Herts AL1 4LW

www.camra.org.uk

01727 867201



A photograph of four men sitting around a wooden table in a pub, each with a glass of beer. They are all smiling and appear to be in a good mood. The background shows a wall with two framed pictures and a large black sign with white text.

For real
friendships
join the
campaign!

Receive exclusive benefits and meet
like-minded people. For more information
on membership and to join visit

www.camra.org.uk/join



CAMPAIGN
FOR
REAL ALE

18TH - 20TH
AUGUST 2017



BAKEWELL
SHOWGROUND

FAMILY ACTIVITIES / WORLD CLASS BEERS / QUALITY STREET FOOD / LIVE MUSIC



FREE ENTRY*
FOR DAY VISITORS.
Camping spaces must
be booked in advance.
*See website for details



E: peakender@thornbridge.co.uk
www.peakender.co.uk
T: 01629 815 999

